

Sommebionne  
C<sup>on</sup> de arr. de S<sup>t</sup> Nicaise

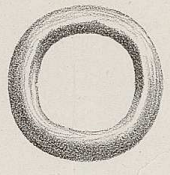
14.3 Marne  
65

La Campagne souterraine 2<sup>e</sup> livraison (Plan No 10)

Marne  
Somme-  
Bionne



$\frac{1}{2}$



$\frac{1}{2}$



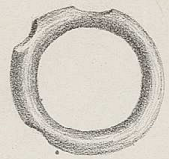
$\frac{1}{2}$



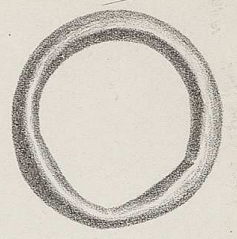
$\frac{1}{2}$



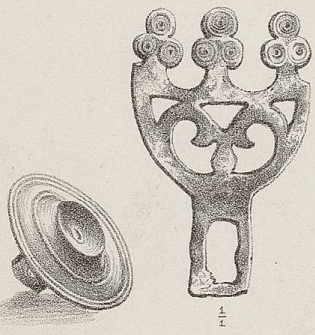
$\frac{1}{2}$



$\frac{1}{2}$



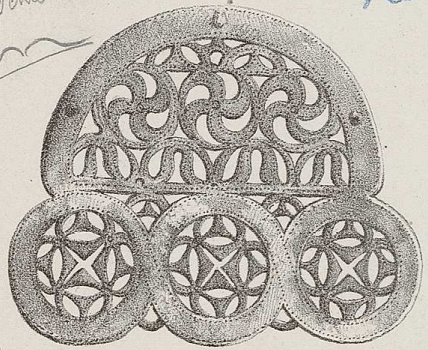
$\frac{1}{2}$



$\frac{1}{2}$

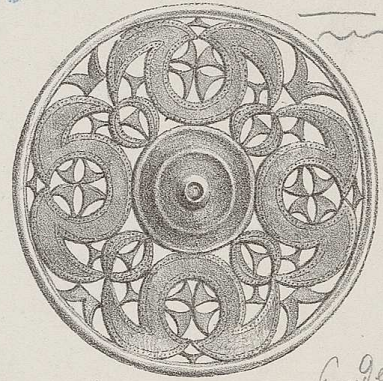


3 semblables



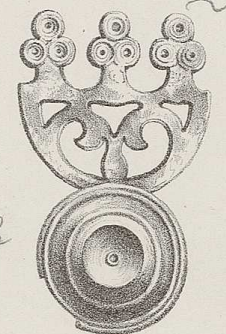
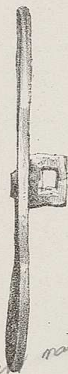
$\frac{1}{2}$

Mon. Biron Morel p. X n° 10 et 11



Reste d'un tiers / seule

619

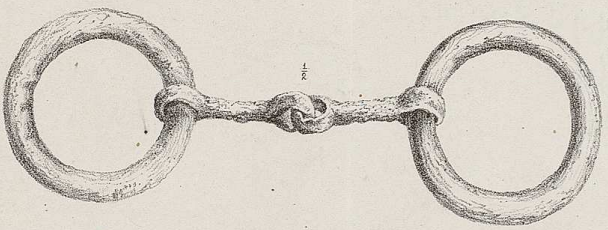


12 feuilles grandes

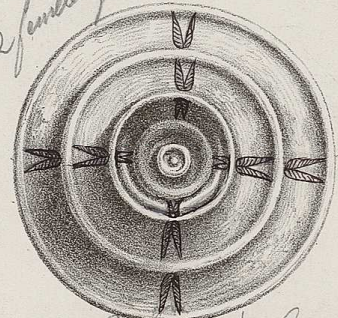


1<sup>re</sup> feuille grande  
2<sup>e</sup> id  
3<sup>e</sup> en son inverse de la première

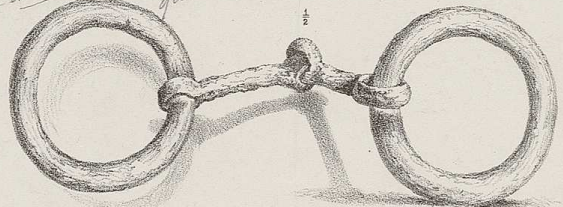
qu'on attendu que la moule est creusée



$\frac{1}{2}$



2 Paliers 1/2 grands  
semblables



$\frac{1}{2}$

Bon

CIMETIÈRE GAULOIS de SOMME-BIONNE, Marne

D'après la lettre de M<sup>r</sup> Morel 7. Février 1877.